

AYEZWA
TRADING & PROJECTS

COMPANY PROFILE

www.ayezwatp.co.za

INDEX

01 Who are we?

03 Mission / Mission

03 Our Services

05 Project Monitoring

03 5Areas Of Expertise

06 Management Team

08 - 11 Our Work



A construction worker wearing a hat and safety vest is working on a roof. The background shows a residential building under construction. A yellow graphic overlay is on the left side of the image.

**WE
BUILD
YOUR
DREAMS**



Who we are

Ayezwa is a 100% black owned level 1 BEE company with a broad network of associates who are highly skilled and experienced in the industry. Ayezwa provides professional and consulting services to the various industries. We have at the core of our company a culture of innovation, collaboration and most importantly, an understanding of how to fulfill and exceed our clients' expectations.

We work in a structured manner that ensures we deliver projects within a planned process, which brings order and mutual understanding, providing space for all of us to be more creative, and to question where we can all improve. Our philosophy is simple: our teams should make distinctive, substantial and lasting improvements to our clients' properties and businesses. We have achieved this by developing a vibrant company, which attracts and retains exceptional people with a strong work ethic.

These extensive resources enable the company to undertake the largest and most complex of projects in virtually any geographic region of South Africa and the continent and in every sector of commerce, industry and public works. In addition to our core services of Quantity Surveying, Project Management, Building Surveying and Dispute Resolution Consultancy, Ayezwa provides specialist techniques to enhance the value of developments. Such techniques include risk analysis and assessment, value management, value engineering and maintenance management.

Project Management Specialist Services Cost Management

•CIDB Grading 3GB PE, 7CE PE, 6ME PE

•NHBRC No: 3000259842



“

Ayezwa is a 100% black owned level 1 BEE company with a broad network of associates who are highly skilled and experienced in the industry.

”



**Plant Hire (Tipper truck
10m³, Excavator
TLB, Roller, ADT
Civil Construction &
Maintenance**

Vision

- To operate professionally and cost effectively.
- To become a competitive force in the industry.

Mission

- To take pride in our work.
- To build structures to the satisfaction of our clients.
- To empower and promote individuals from historically disadvantaged backgrounds.
- To be prepared to take on new challenges and to do our best to succeed.
- To continuously develop the skills of all our personnel.

Services Offered

- Plant Hire
- Building Construction & Maintenance
- Construction
- Shuttle services
- Conference accessories
- Corporate gifts & products
- Gifts promotional
- Packaging materials
- Air Conditioner Supply, Installation And Repair Boiler Repairs & Refrigerators
- Sound & music systems/ equipment
- Stationery office basic
- Entertainment facilities
- Printing
- Renovations services



**Air Conditioner Supply,
Installation And Repair
Boiler & Refrigerators**

**PROFESSIONAL
CONSULTING SERVICES**

To various industries

Project Monitoring

Ayezwa's Independent Project Monitoring Service provides confidential appraisals, comprehensive investigations and due diligence reports for funding institutions, developers, building owners and contractors. By reporting on the development appraisal, build cost, suggested construction programme, tender and contract procedures, insurances, quality control processes, design economics and risk, we are able to monitor closely the delivery of agreed contractual arrangements.

Ayezwa's experienced professionals regularly report on progress from site visits, comment on management accounts and cash flow projections, anticipated final costs, maintenance of loan conditions and updating sales data. We aim to build success through innovation, enthusiasm and to enhance the overall knowledge and skills of our team.

Areas Of Expertise

Ayezwa's areas of expertise to clients:

- The ability to be cost effective in our pricing with savings as a result of our efficiencies.
- Large and medium sized contracts with on time delivery and ability to co-ordinate projects successfully with an experienced project management team.
- Assist and advise in the design and delivery of large-scale projects. We regularly work closely with Architects and Quantity Surveyors to streamline the approach to projects.
- A Project Management Team with capabilities to monitor standards, deliveries and qualities.
- Technical assistance in the areas of design, material and increased product life.
- Solutions by providing expertise and cost reductions for our customers. We are in a position to audit projects and suggest cost saving solutions.
- Refurbishment of listed Buildings.
- A network of sub-supply companies enables us to offer a wide range of services with specialization in specific areas

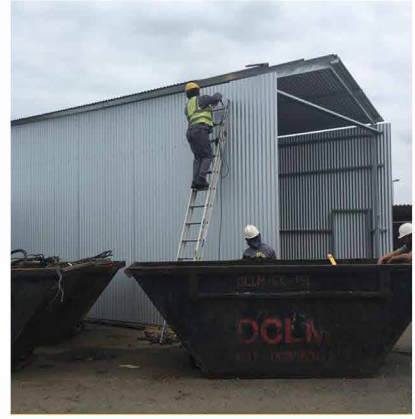
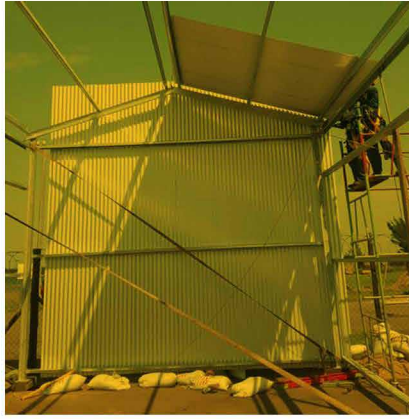


Management Team

Mr. Nkanyiso Gcabashe
Managing Director

Our management team and associates have over 10 years of cumulative knowledge and experience in corporate business, SMME projects. We are dedicated to sound business ethics, professionalism, integrity, and delivery beyond customer expectations.

1. Boat Shed Transnet

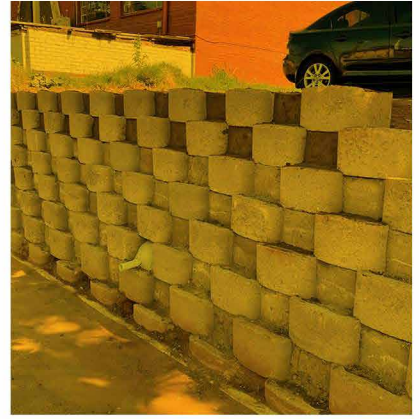


2.

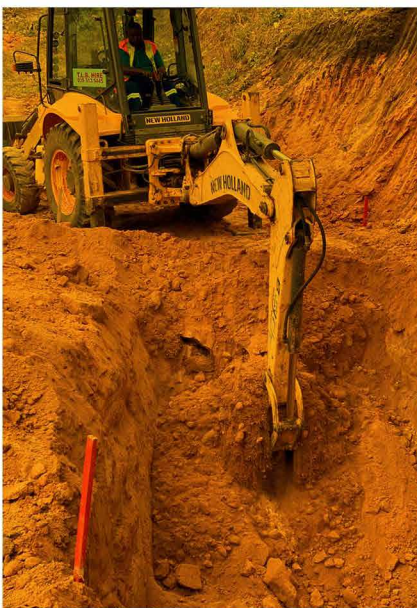
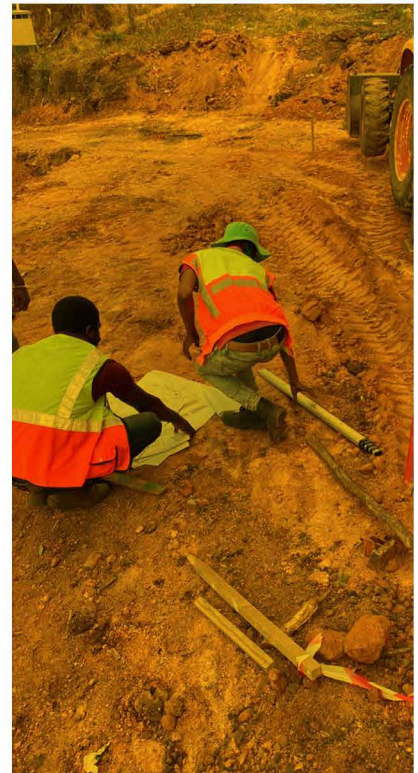
DBSA VIP Toilets



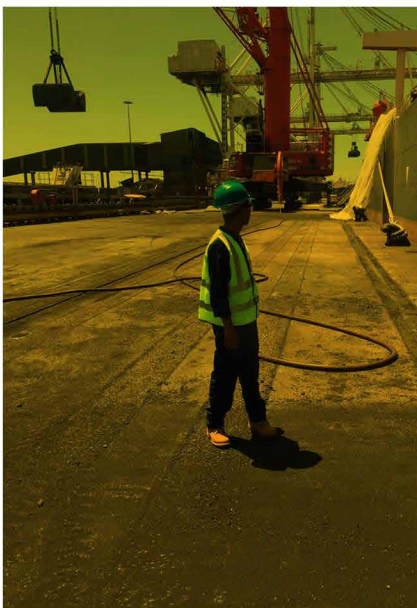
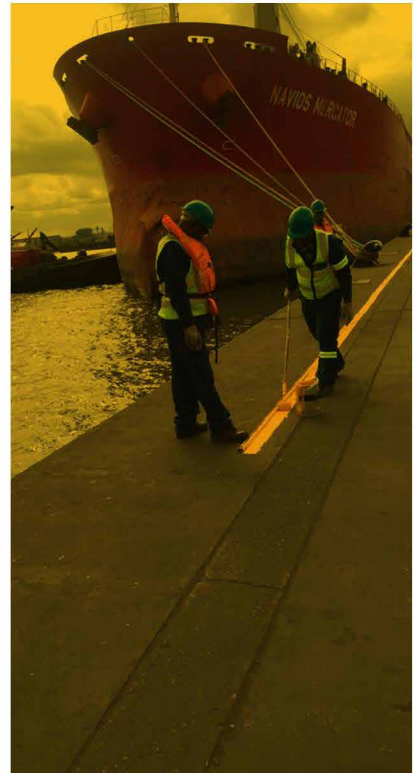
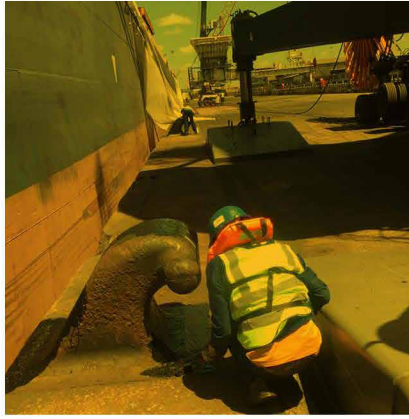
3. Ethekwini Metro



4. Rand water



5.
Richards
Bay Port,
Transnet





Our List Of Projects

Description	Site	Client
Supply & installation of aircon	Xavier & Temba Testing Grounds	Department of Roads & Transport Gauteng
Implementation of Empuluzi Water supply scheme	Chris Hani District	Chris Hani Municipality
Welding of pipelines at Matholesville Township	Chris Hani District	Mbhashe Local Municipality
Concrete formwork & reinf at Kirkwood reservoir (5ML)	Panel of constructors for construction of water and infrastructure projects	The Invula Trust
Casting concrete, erection of formwork & steel fixing at Ngqushwa reservoir (5ML)		
Infrastructure projects – Wetworks at Rhini reservoir		
Repair of Boiler & Fridge Replacement	Ermelo Prison	Department of Public Works
Repairs, Maintenance & Refurbishment at Ncora Hydro Station in Cala	Eskom Distribution (Southern Region)	Eskom
Refurbishments at Gariep Dam station (section 4) 360MW	Eskom Distribution (Southern Region)	Eskom
Repairs, Maintenance & Refurbishment at Collywobblers Hydro Station	Eskom Distribution (Southern Region)	Eskom
Construction of 1.5ml Reservoir for Dutywa water supply project phase 5	Engcobo Local Municipality	Engcobo Local Municipality
Supply of Diesel 12 months	Camden Power Station	Eskom
Construction of bulk water rising main gravity and ancillary work in Oshabeni	Ugu Municipality	Ugu Municipality
Construction of +- 3.5km 450nd steel gravity main water supply pipeline between Lusikisiki & Flagstaff	Ingquza Municipality	Ingquza Municipality
Stand Alone bulk water supply phase 2 Cobbleset Lane Zone 2	EThekweni	EThekweni Municipality
TNPA Building of Boat House & Building of Walkways		Transnet Port of Richards Bay
Supply * Installation of Steel pipes (300mm dia) kentane bulk water project (Mbhashe phase 2)		Nyandeni Local Municipality
Panel of Contractors Level 1 and Level 2 maintenance of Johannesburg Roads Agency for Three (3) years.		Market Theatre Foundation
Construction of Storage Facility and Buildings		Electronic Toll Company (ETC)
Office Refurbishments		Department of Health Free State
Inzwani JV 3 Years Mechanical Engineering Maintenance		

Johannesburg Office

 P.O Box 3361, Halfway House, 1685

 +27 11 708 0006

 +27 86 545 3103

 info@ayezwatp.co.za

 www.ayezwatp.co.za

Ermelo Office

 2539 Kumalo Street, Wesselton, Ermelo, 2351

P.O Box 2061, Ermelo, 2351

 +27 11 708 0006

 +27 86 545 3103

 info@ayezwatp.co.za

 www.ayezwatp.co.za

Durban Office

 2 Willoughby Road, Glenmore, 4001

P.O Box 2635, Durban, 4000

 +27 (32) 559-8143

 +27 86 545 3103

 info@ayezwatp.co.za

 www.ayezwatp.co.za

